

Product leaflet

Product	Model No.	Ordering No.
Powered air purifying respirator	SR 500	H06-0112

Product Description

The SR 500 is a battery-powered fan that, together with a filter and an approved head top, is included in the Sundström fan-assisted respiratory protective device systems. The SR 500 can be used as an alternative to filter respirators in all situations in which these are recommended. This applies particularly to work that is hard, warm or of long duration.

The human interface may consist of a hood, face shield, half mask or full face mask. The fan is equipped with a filter, and the filtered air is fed through a hose to the human interface. The pressure then generated prevents surrounding pollutants from penetrating into the mask.

The characteristics of the SR 500 are as follows:

The battery is of lithium-ion type • Two battery alternatives, i.e. STD (Standard 2.2 Ah) and HD (Heavy Duty 3.6 Ah) • The charging time for the Standard battery is around 1.5 hours and for the Heavy Duty battery, about 2 hours • Equipped with two filters/combined filters • Operating time of up to 13 hours • The same control is used for starting, stopping and selection of operating status • Display with symbols • Equipped with automatic air flow control with compensation for air pressure and temperature • Can be used together with hoods SR 520, SR 530, SR 561, SR 562, face shield SR 540, half mask SR 900, full face mask SR 200, welding shield SR 590, helmet with visor SR 580 or welding shield/helmet with visor SR 584/SR 580.

Electronics ingress protection is approved in IP class IP67 according to IEC / EN 60529.

The SR 500 is also available in an explosion-protected version designated the SR 500 EX for use in a potentially explosive atmosphere (ATEX Directive 94/9/EC). See the separate product leaflet.

Technical specification

	SR 500	EN 12941:1998 + A2:2008	EN12942:1998 + A2:2008
Air flow, min/max	175/240 l/min	≥ 120 l/min	-
STD-battery/HD-Battery	14.8V, 2.2 Ah/3.6 Ah	-	-
Operating times at 175/240 l/min:			
P3, STD-battery	8 h (7 h ³)/5 h (4 h ³)	≥ 4 h	≥ 4 h
P3, HD- battery	13 h (12 h ³)/8 h (7 h ³)	≥ 4 h	≥ 4 h
Weight with STD-battery and P3 filter	≈ 1 350 g	≤ 3,500 g	≤ 3,500 g
Service conditions	-10 °C to +55 °C, < 90% RH, 600 to 1200 hPa	-	-
Storage conditions	-20 °C to +40 °C, < 90% RH	-	-
Low flow warning level	< 175 l/min	≤ 175 l/min	≤ 175 l/min
Assigned Protection Factor¹: SR 520, SR 530, SR 540, SR 561/562, SR 580, SR 584, SR 590	40 (TH3)	-	-
Assigned Protection Factor¹ SR 200	40 (TM3)	-	-
Nominal Protection Factor² SR 520, SR 530, SR 540, SR 561/562, SR 580, SR 584, SR 590	500 (TH3)	-	-
Nominal Protection Factor² SR 200	2000 (TM3)	-	-
Approvals	EN 12941:1998 + A2:2008 EN 12942:1998 + A2:2008	-	-

1) Specified in BS 4275 and applies generally to all approved fan-assisted respiratory protective devices, regardless of the test results.

2) According to EN 529:2005.

3) SR 900 + SR 951/SR 952.



Head Office

Tel: +46-(0)8-562 370 00
Fax: +46-(0)8-562 370 20

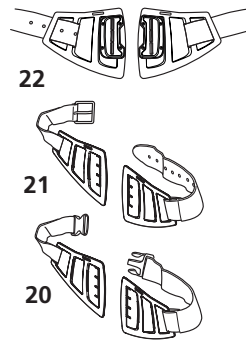
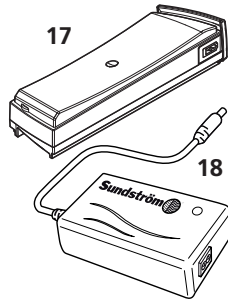
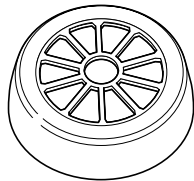
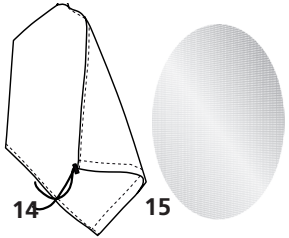
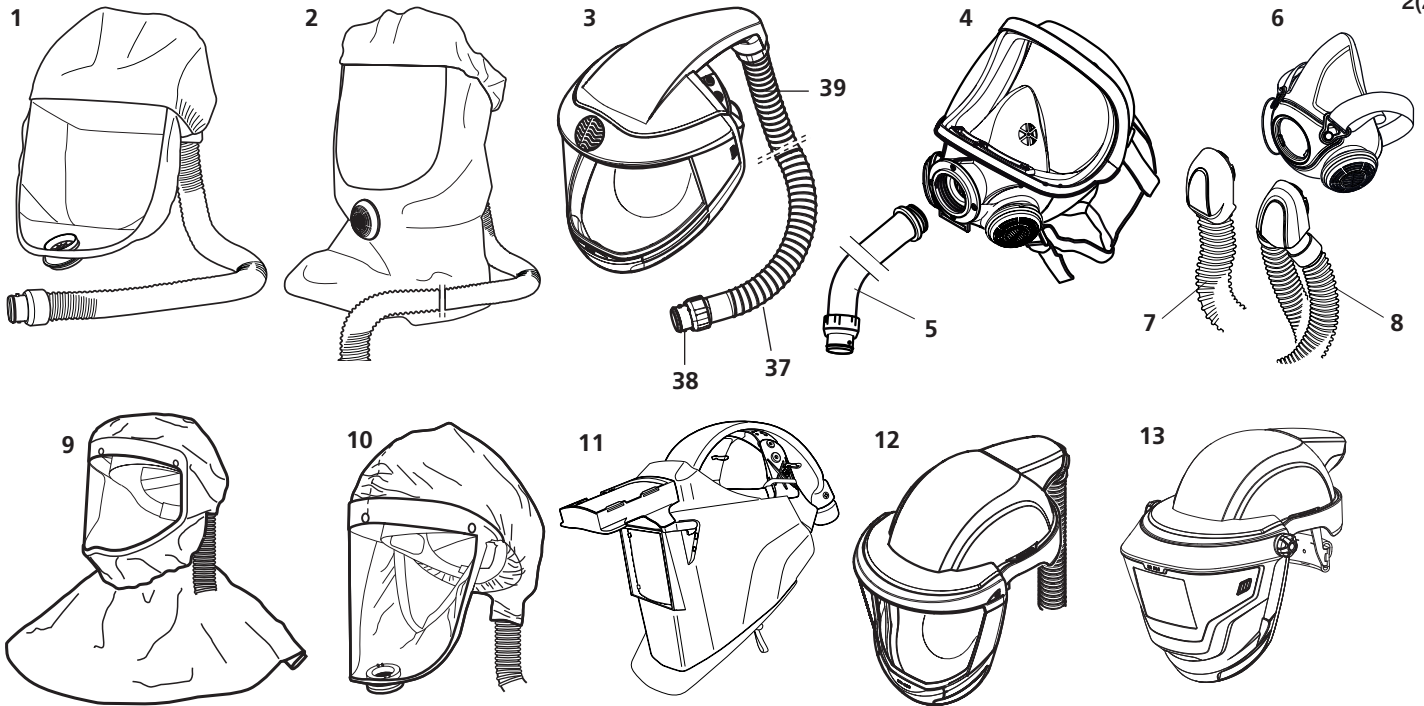
Visiting address:
Stockholmsvägen 33
SE-181 33 Lidingö

Factory

Tel: +46-(0)8-562 370 00
Fax: +46-(0)8-562 370 60

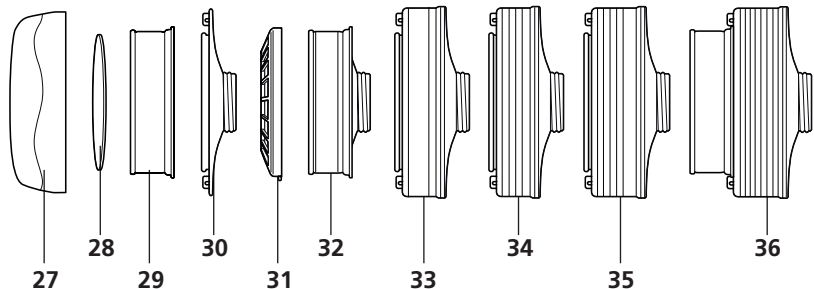
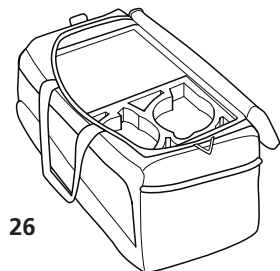
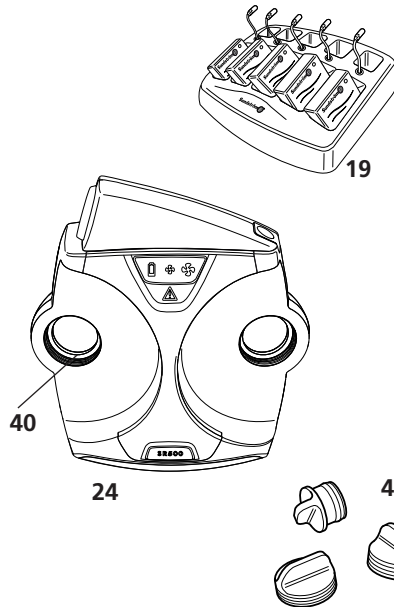
Visiting address:
Västergatan 4
SE-341 50 Lagan

Sundström 
www.srsafety.com



Head-tops, spare parts and accessories

Item No. Part	Ordering No.
1. Hood SR 520 M/L	H06-0212
1. Hood SR 520 S/M	H06-0312
2. Hood SR 530	H06-0412
3. Face shield SR 540	H06-0512
4. Full face mask SR 200, PC visor	H01-1212
4. Full face mask SR 200, glass visor	H01-1312
5. PU hose SR 550 for SR 200	T01-1216
5. Rubber hose SR 551 for SR 200	T01-1218
6. SR 900 S	H01-3012
6. SR 900 M	H01-3112
6. SR 900 L	H01-3212
7. Hose SR 951	T01-3003
8. Twin hose SR 952	R01-3009
9. Hood SR 561	H06-5012
10. Hood SR 562	H06-5112
11. Welding shield SR 590	H06-4012
12. Helmet with visor SR 580	H06-8012
13. Welding shield/Helmet with visor SR 584/SR 580	H06-8310
14. Flow meter SR 356	R03-0346
15. Steel net disc SR 336	T01-2001
16. Asbestos Kit SR 509	T06-0105
17. Battery SR 501, 2,2 Ah	R06-0108
17. Battery HD SR 502, 3,6 Ah	T06-0101
18. Battery charger SR 513	R06-0103
19. Charging station without chargers SR 506	T06-0108
19. Charging station, complete SR 516	T06-0111
20. Belt SR 508	R06-0101
20. Rubber belt SR 504	T06-0104
21. Leather belt SR 503	T06-0103
22. HD belt SR 553, standard	T06-0119
22. HD belt SR 553, large	T06-0120
23. Harness SR 552	T06-0116
24. Fan SR 500, bare	R06-0110
25. Splash cover SR 514	T06-0114
26. Storage bag SR 505 w two compartments	T06-0102
27. Pre-filter holder SR 512	R06-0106
28. Pre-filter SR 221	H02-0312
29. Particle filter P3 R, SR 510	H02-1312
30. Filter adapter SR 511	R06-0105
31. Pre-filter holder SR 5153 for SR 710	R01-0604
32. Particle filter P3 R, SR 710	H02-1512
33. Gas filter A2, SR 518	H02-7012
34. Gas filter ABE1, SR 515	H02-7112
35. Gas filter A1BE2K1, SR 597	H02-7212
36. Combined filter A1BE2K1-Hg-P3 R, SR 599	H02-7312
37. Hose SR 541 for SR 540	R06-0501
38. O-ring for breathing hose	R06-0202
39. Flat gasket for hose SR 541	R06-0506
40. Gasket for fan	R06-0107
41. Plug kit	R06-0703



Product leaflet

Product

Full face mask

Model No.

SR 200, PC visor
SR 200, glass visor

Ordering No.

H01-1212
H01-1312

Product Description

The SR 200 full face mask is made of silicone and is produced in one size that will fit most face sizes. The mask is equipped with three inhalation valves and two exhalation valves, and the breathing resistance is therefore very low. The exhalation valve covers with baffles effectively protect the valves and membranes against dust and paint mist. The design and location of the exhalation valves improve the scope available for communicating. The material and pigments of the mask body are FDA- and BGA approved for exposure to provisions, which minimizes the risk of contact allergies. The easily adjustable elastic head harness of the mask is secured to the visor frame and to the exhalation valves which, together with a large crown plate, contributes towards a comfortable and secure fit. The spherical visor of the mask is made of scratch-resistant polycarbonate, which provides a large field of vision. The mask can be used either as a filtering device in combination with filters from the Sundström range of filters, or as breathing apparatus with a continuous air flow together with the SR 307 compressed air attachment. The SR 200 can also be used as head top together with the Sundström fan unit SR 500 or SR 700. Holder for pre-filter is included.

The SR 200 full face masks together with the SR 500 EX fan are approved for use in a potentially explosive atmosphere (ATEX Directive 94/9/EC and IECEx Scheme). Best stored in box SR 344 alternatively storage case SR 339-1 or SR 339-2.

Technical specification

	SR 200	EN 136:1998, EN 166:1995, EN 148-1:1999	
Inhalation resistance at 30 l/min	≈ 10 Pa	≤ 50 Pa	
Exhalation resistance at 160 l/min	≈ 56 Pa	≤ 300 Pa	
Service temperature	-10 – +55 °C, < 90 % RH	-	
Storage temperature	-20 – +40 °C, < 90 % RH	-	
Weight	≈ 450 g	-	
Impact test with 6 mm dia. steel ball against PC-visor	120 m/s	120 m/s	
Standard thread connection	40 x 1/7"	40 x 1/7"	
Assigned Protection Factor ¹	40 (P3) 20 (GasX) 20 (GasX P3)	- - -	
Nominal Protection Factor ²	1000 (P3) 2000 (GasX) 1000 (GasX P3)	- - -	
Approvals	Directive PPE 89/686/EEC ATEX 94/9/EC IECEx Scheme	Standards EN 136:1998 EN 60079-0:2012, EN 60079-11:2007, EN 61241-11:2006, EN 13463-1:2009 IEC 60079-0:2011, IEC 60079-11:2006, IEC 61241-11:2005	Classification/markings Class 3 ³ , Class 2 ⁴ Ex II 2 G Ex ib IIA T3 Gb ⁵ Ex II 2 G Ex ib IIB T3 Gb ⁶ Ex II 2 D Ex ib IIIC T195°C Db ⁷ Ex ib IIA T3 Gb ⁵ , Ex ib IIB T3 Gb ⁶ Ex ib IIIC T195°C Db ⁷

1) Specified in BS 4275 and applies to all approved full-face masks with particulate filter P3, regardless of the test results.

2) According to EN 529:2005.

3) Applies to H01-1212 with PC visor.

4) Applies to H01-1312 with glass visor.

5) Applies to H01-1212 with PC visor together with SR 500 EX fan.

6) Applies to H01-1312 with glass visor together with SR 500 EX fan.

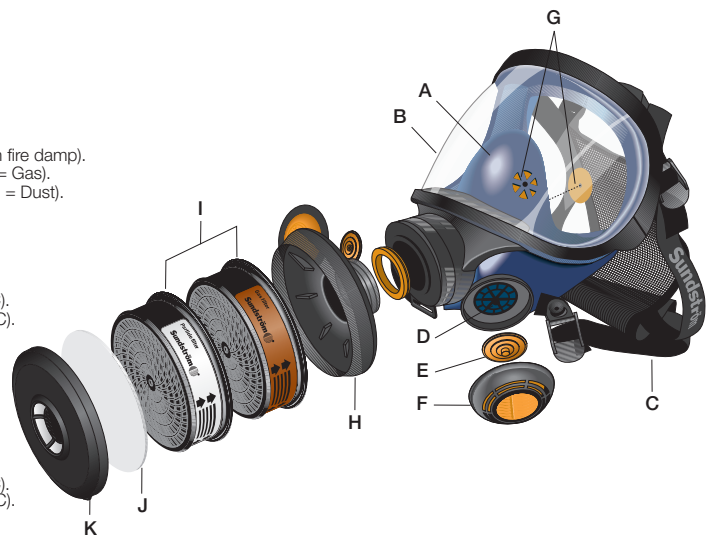
7) Applies to all SR 200 models together with SR 500 EX fan.

Key to ATEX marking

Ex	Explosion protection mark.
II	Equipment group (explosive atmospheres other than mines with fire damp).
2 G	Equipment category (2 = High level of protection for Zone 1, G = Gas).
2 D	Equipment category (2 = High level of protection for Zone 21, D = Dust).
Ex	Explosion protected.
ib	Type of protection (Intrinsic safety).
IIA	Gas group (Propane).
IIB	Gas group (Ethylene).
IIIC	Dust material group (zone with conductive dust).
T3	Temperature class, gas (maximum surface temperature +200°C).
T195°C	Temperature class, dust (maximum surface temperature +195°C).
Gb	Equipment Protection Level, gas (high protection).
Db	Equipment Protection Level, dust (high protection).

Key to IECEx marking

Ex	Explosion protected.
ib	Type of protection (Intrinsic safety).
IIA	Gas group (Propane).
IIB	Gas group (Ethylene).
IIIC	Dust material group (zone with conductive dust).
T3	Temperature class, gas (maximum surface temperature +200°C).
T195°C	Temperature class, dust (maximum surface temperature +195°C).
Gb	Equipment Protection Level, gas (high protection).
Db	Equipment Protection Level, dust (high protection).



- | | | | |
|-----------|------------------------------|-----------|-------------------------------|
| A. | Mask body | G. | Inhalation valve |
| B. | Visor, PC or glass | H. | Adapter |
| C. | Head harness | I. | Filters (not included) |
| D. | Exhalation valve seat | J. | Pre-filter |
| E. | Exhalation membrane | K. | Pre-filter holder |
| F. | Protective cap | | |



Head Office

Tel: +46 10 484 87 00

Visiting address:
Stockholmsvägen 33
SE-181 33 Lidingö

Factory

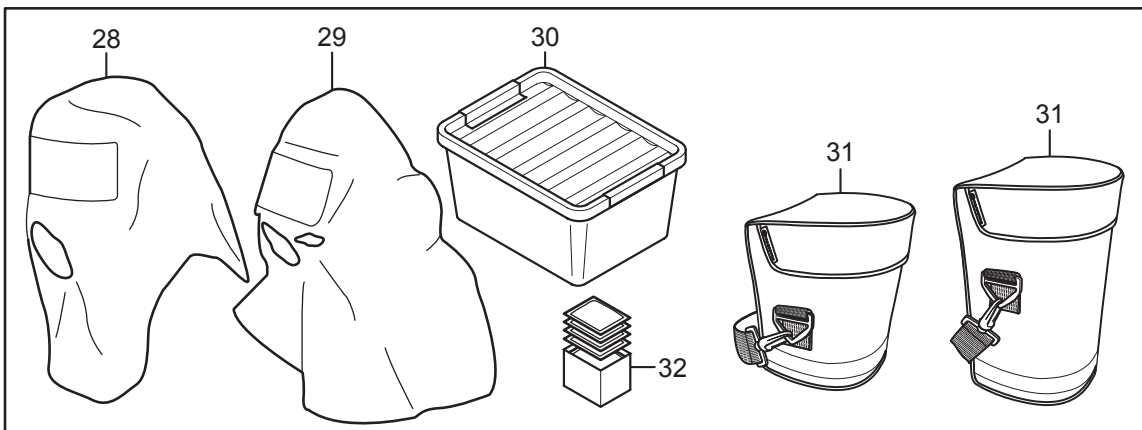
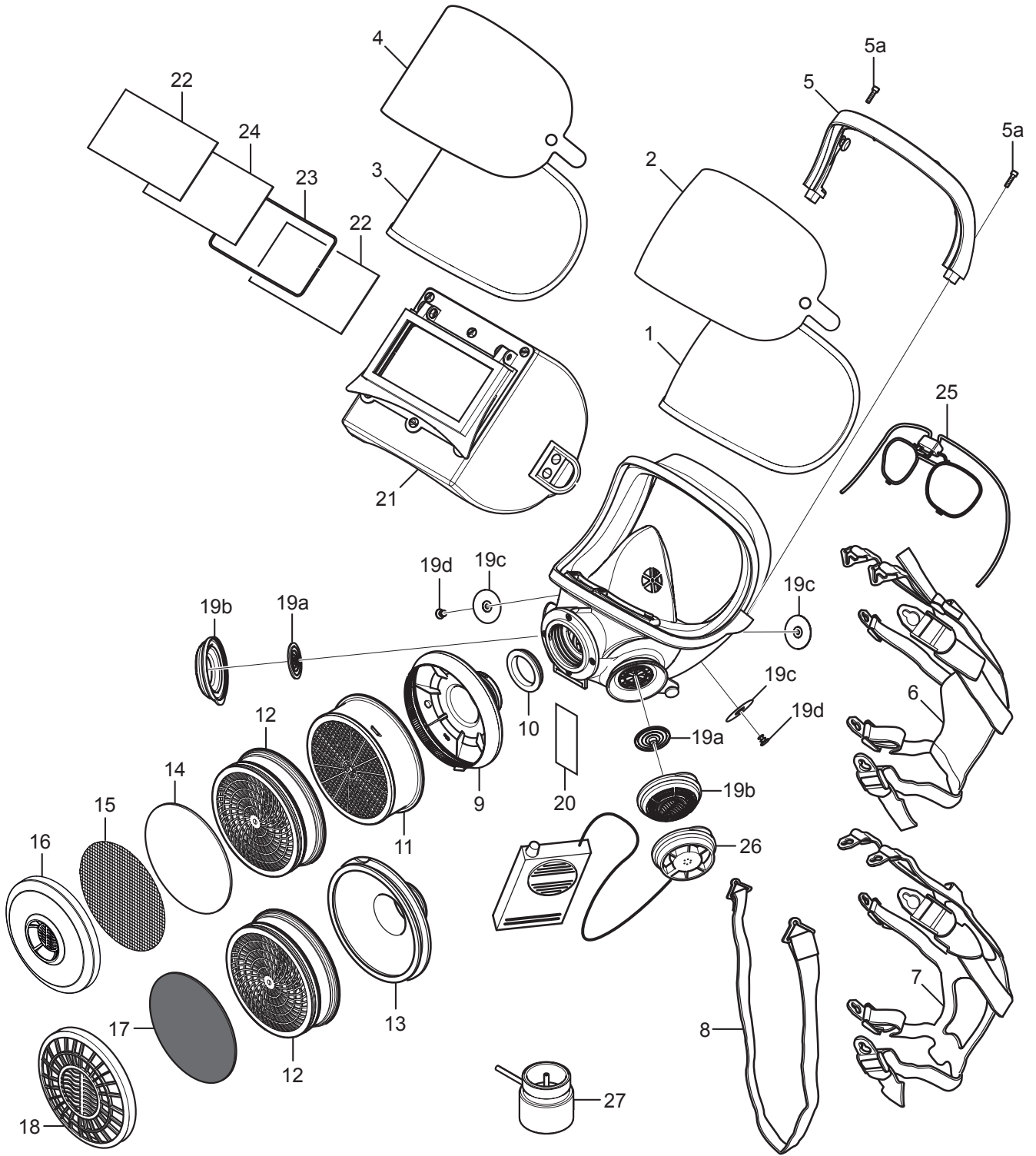
Tel: +46 10 484 87 00

Visiting address:
Västergatan 4
SE-341 50 Lagan

Sundström
www.srsafety.com

SR 200

Spare parts / Accessories



No.	Description	Ordering No.
1.	PC-visor SR 366 (polycarbonate)	R01-1201
2.	Peel-offs SR 343 for PC-visor	T01-1204
3.	Glass visor SR 365 (laminated glass)	T01-1203
4.	Peel-offs SR 353 for glass visor	T01-1205
5.	Upper frame half	R01-1202
5a.	Screw x2	-
6.	Head harness, fabric	R01-1203
7.	Head harness, rubber SR 340	T01-1215
8.	Carrier strap	R01-1206
9.	Filter adapter SR 280-3	H09-0212
10.	Seal	R01-1205
11.	Gas filter (SR 217 A1, SR 218 A2, SR 315 ABE1, SR 294 ABE2, SR 297 ABEK1, SR 298 AX, SR 215 K1, SR 295 K2, SR 299-2 ABEK-Hg-P3)	-
12.	Particle filter SR 510 P3 R	H02-1312
13.	Particle filter adapter SR 611	T01-1223
14.	Pre-filter SR 221	H02-0312
15.	Steel net disc SR 336	T01-2001
16.	Pre-filter holder	R01-0605
17.	Test disc SR 322	R01-0303
18.	Pre-filter holder SR 5153	R01-0604
19.	Set of membranes	R01-1204
19a.	Exhalation x2	-
19b.	Valve covers x2	-
19c.	Inhalation x3	-
19d.	Dowels x2	-
20.	Name label SR 368	R09-0101
21.	Welding cassette SR 84	T01-1212
22.	Protective lens	R03-0507
23.	Retaining clip	R03-0518
24.	Welding lens EN 10 60x110	R03-0510
	Welding lens EN 11 60x110	R03-0511
	Welding lens EN 12 60x110	R03-0512
25.	Spectacle frame SR 341	T01-1201
26.	Small talk/Voice amplifier SR 324	T01-1217
27.	Test adapter SR 370	T01-1206
28.	Protective hood SR 64	H09-0301
29.	Protective hood short SR 345	H09-1012
	Protective hood long SR 346	H09-1112
30.	Storage box SR 344	T01-1214
31.	Storage bag 4.5 l SR 339-1	H09-0113
	Storage bag 6.3 l SR 339-2	H09-0114
32.	Cleaning tissue SR 5226. Box of 50.	H09-0401