

5 - PUTTING ON THE HARNESS

A.

B1.

B2.

C1.

C2.

D.

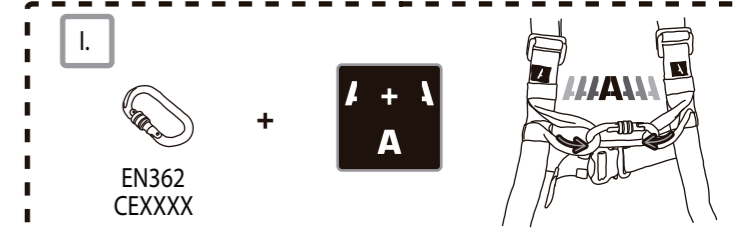
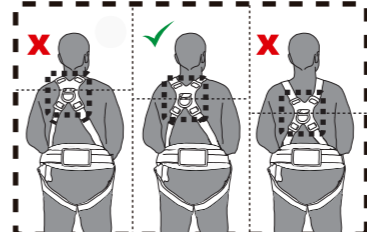
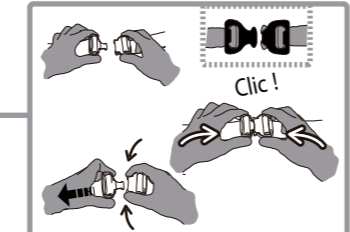
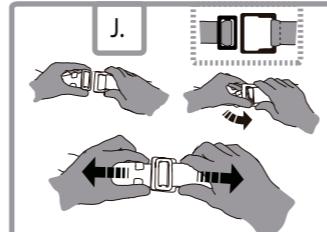
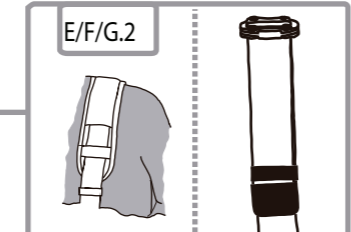
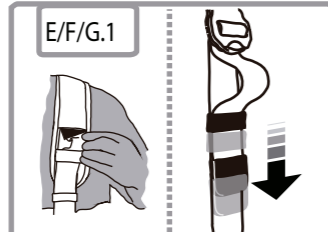
E. F.

L. Fall Arrest Indicator PRO Range

J.

EN362 CEXXXX

	A	B	C	D
S/M	80-120	75-115	45-75	145-180
L/XL	95-130	90-135	55-85	160-195
XXL	110-140	105-150	65-95	175-210
Universal	one size fit most			



6 - FIELD OF APPLICATION

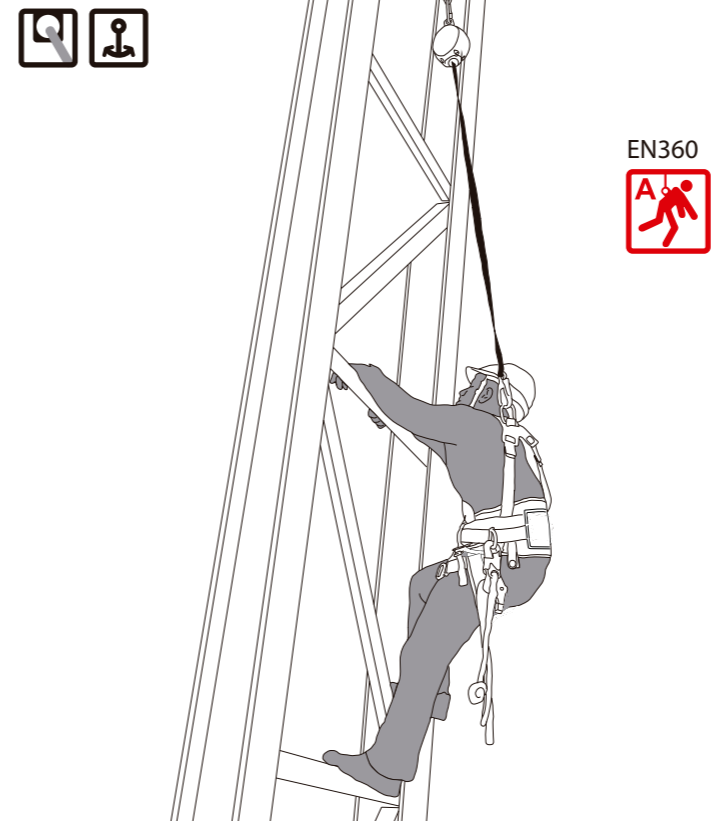
1- Fall Arrest System



3- Fall Arrest System



5- Fall Arrest System



Fall Arrest System Anchor Point

7 - TRACEABILITY AND MARKINGS

A - Product type
Standard (Harness)
B - Notify Body for Artº11
Control
C - Please Read User
Instructions Before Use
D - Brand name
E - Manufactured Date
F - QRCode
G - Reference Nº
H - Serial Number

8 - NOMENCLATURE OF PARTS

- 1 Dorsal D-Ring (A Point) EN361
- 2 Back Plate
- 3 Standard Buckles
- 4 Stitches
- 5 Sit Support
- 6 Leg Strap
- 7 Polyester Webbing - Webbing waterproof polyester (PRO range), polyester (BASIC range); - D-rings and Buckles in aluminium (PRO range), in steel (BASIC range).

1 - APPLICATION

Prior to use, the following safety instructions and the current status of the technology must be taken into consideration.

Keep this operating manual with the product and carefully fill out the sheet depending on the product Fallsafe-online.

Completely read the operating manual.

Understand and accept the possibilities and restrictions of the protective equipment as well as the risks associated with its use.

This protective equipment should only be used by persons who are familiar with this operating manual, who are physically and mentally healthy, and who have been trained in the use of fall-protection systems.

Medical conditions (cardiovascular problems, intake of medicines, alcohol) can affect the safety of the user.

Measures (emergency plan) must be specified for fast rescue prior to using the fall prevention system. Attention: After a fall a longer period of suspension can cause severe injuries or even death (suspension trauma).

When using the protective equipment the respective accident prevention guidelines (e.g. working in areas where there is danger of falling) must be complied with.

For horizontal implementation only use layard that are suited for this purpose, and that have been tested for the respective falling edge (sharp edges, sheet metal with trapezoidal corrugations, steel grids, concrete, etc.). Attention: Avoid pendulum fall!

The combination of the specific elements is only permitted as specified in this operating manual. Incorrect applications can impair safe function – this can result in severe or fatal injuries.

The protective equipment has been developed for personal safety and may not be used for other purposes.

Each person active in the areas where there is danger of falling is responsible for ensuring that the connection to the anchorage system is kept as short as possible to prevent the possibility of fall.

If uncertainties concerning safe use of the product arise, contact the manufacturer!

www.fallsafe-online.com

2 - MAINTENANCE

PRIOR TO EACH USE THE USER MUST INSPECT:

– Fall-arrest eyelets and anchorage eyelets (e.g. for wear)

– Buckles (e.g. ensure that they have safety locked in place – “click” damage)

– Harness and seams (e.g. check for cuts, abrasion or other damage)

– Also use the test sheet to ensure for yourself that the protective equipment is suitable for the application

ANNUAL INSPECTION:

The protective equipment must be subjected to a visual and function check at least every 12 months by an appropriately qualified expert. Depending on the environment and the intensity of use it may be necessary to shorten the inspection intervals

– The inspection must be documented on the test sheet that must be stored along with the protective equipment

Function test: The insert buckles should not detach under tensile load when only one unlock mechanism is activated.

When only one unlock mechanism is activated.

ATTENTION! DO NOT USE ANY LONGER IF:

– Damage or wear is visible on components such as seams and harness straps (cracks and cuts), plastic and/or metal fittings, etc.

– Stress has occurred due to falling

– Damage is determined through the regular inspection

– The service life has elapsed

THE SERVICE LIFE

Of your protective equipment depends on the respective use and cannot be generally defined due to different frequencies of use, use conditions, care and storage.

When complying with the use guidelines the service life dating from the year of manufacture, with annual inspection by an expert is a maximum of 8 years after first use and 10 from manufacture. Repairs, changes, or supplements to the protective equipment should only be executed by the manufacturer.

3 - SPECIFIC INSTRUCTIONS

GENERAL INSTRUCTIONS FOR THE USE OF CONNECTORS – EN 362:2004 / EN 12275:1998 ATTENTION : Read carefully before use. The connectors without the marking “EN 362:2004” comply with the previous issues of the EN 362 standard (1993). These instructions contain all the necessary information for the correct and safe use of the connectors in the fields of activity: rescue, mountaineering, climbing, caving, “Via Ferrata”, splittings.

(1) Make sure the attachment points don't show any distortions, rust or wear.

(2) Visually inspect the outer shell for cracks, deformations, burns or signs of corrosion.

(3) Check that all the bolts and nuts are in place and properly tightened.

(4) Check the good condition of the stitches and the mechanical splittings.

(5) Make sure the connectors lock properly and the levers move freely and efficiently.

(6) Check the fall indicator, if it indicates a major fall has been arrested, require immediate servicing and do not use the unit.

(7) Pull out the line to the available length to ensure that it pays out and recoils smoothly. Check for signs of abrasion or damage. Draw under control the webbing / rope / cable back in to the unit.

(8) Pull sharply the line to engage the brake.

(1) Connect only to a proper anchor point conforming to EN795 (min 12 kN).

(2) Connect the free end of the line with the sternal or dorsal EN361 D-ringing on your full body harness.

(3) Verify the connectors are safely locked.

(4) Make sure you always operate with an adequate clearance underneath, in case of a fall, over the feet.

Underneath, in case of a fall, over the feet.

D = 2 m, for retractable fall arresters including only the fall indicator (G); D = 4 m, for units including a shock absorber (H).

(5) Consider the pendulum effect operating the unit in a non vertical situations.

(6) When the unit is used in a non vertical situation, make sure you never risk a fall over sharp edges which can seriously damage the line or, in extreme cases, cut it. In case of doubt about the good state of the line, require immediate servicing and do not use the device.

slicone oil used for lubricating metal and non-metal surfaces (e.g. LOCKTITE 8021). If the connector comes in contact with salt water, wash it medially and lubricate it. If necessary maintenance operations must be carried out by competent persons explicitly authorized and scrupulously following the operational instructions established by the producer.

FALL SAFE

(EN) Dangerous products
(FR) Produits dangereux
(DE) Gefährliche Produkte
(IT) Prodotti pericolosi
(ES) Productos peligrosos
(PT) Produtos perigosos

(EN) Maintenance
(FR) Entretien
(DE) W artung
(IT) Manutenzione
(ES) Mantenimiento
(PT) Manutenção

(EN) D rying
(FR) Séchage
(DE) Trocknen
(IT) Asciugamento
(ES) Secado
(PT) Secagem

STORAGE / CARE

<p>(EN) Temperature (FR) Température (DE) Temperatur (IT) Temperatura (ES) Temperatura (PT) Temperatura</p>	<p>(EN) Storage / Transport (FR) Stockage / Transport (DE) Lagerung / Transport (IT) Conservazione / Trasporto (ES) Almacenamiento / Transporte (PT) Conservação / Transporte</p>	<p>(EN) Cleaning / Disinfection (FR) Nettoyage / Désinfection (DE) Reinigung / Desinfektion (IT) Pulizia / Disinfezione (ES) Limpieza / Desinfección (PT) Limpeza / Desinfecção</p>
---	---	---

WARNING

Activities involving the use of this equipment are inherently dangerous. You are responsible for your own actions and decisions.

Before using this equipment, you must:

- Read and understand all Instructions for Use.
- Get specific training in its proper use.
- Become acquainted with its capabilities and limitations.
- Understand and accept the risks involved.

FAILURE TO HEED ANY OF THESE WARNINGS MAY RESULT IN SEVERE INJURY OR DEATH.

MADE IN PORTUGAL

FALL SAFE

www.fallsafe-online.com

Fall Arrest Blocks
EN 360:2002

WARNING

Activities involving the use of this equipment are inherently dangerous. You are responsible for your own actions and decisions.

Before using this equipment, you must:

- Read and understand all Instructions for Use.
- Get specific training in its proper use.
- Become acquainted with its capabilities and limitations.
- Understand and accept the risks involved.

FAILURE TO HEED ANY OF THESE WARNINGS MAY RESULT IN SEVERE INJURY OR DEATH.

60-7020 REV.Y STD2017

Connecting Devices

FALL SAFE

www.fallsafe-online.com

Ready for: **FALL SAFE INSPECTOR**

RFID QR CODE SN .APK

SGS UKAS

FALL SAFE ONLINE, LDA
Zona Industrial da Varziela, Rua B – Lote 54
4480-620 Vila do Conde
Portugal, EU

Telephone: +351 252 480 060
Fax: +351 252 480 069
www.fallsafe-online.com
E-mail: support@fallsafe-online.com

INDEX

- Application
- Maintenance
- Specific Information
- Installation
- Connectors Adjustment
- Markings
- Legend

1 - GENERAL INSTRUCTIONS

USE INSTRUCTIONS

GENERAL INSTRUCTIONS FOR THE USE OF CONNECTORS-EN 362:2004 / EN 12275:1998 ATTENTION : Read carefully before use. The connectors without the marking "EN 362:2004" comply with the previous issue of the EN 362 standard (1993). These instructions contain all the necessary information for the correct and safe use of the connectors in the fields of activity: rescue, mountaineering, climbing, caving, "Via Ferrata", mountain skiing, rafting, free climbing, working at heights... The connectors covered by these instructions are personal protection devices designed to be integrated in fall arrest personal protection systems such as harnesses and cables. The full body harness is the only acceptable body retaining device that can be used in a fall arrest system. The connectors are a vital transmission component of the mechanical resistance between a proper anchorage point and the user who should accidentally fall. A malfunction due to improper use of the equipment is dangerous for the physical health of the user.

The connectors must be used as follows: closed - with the closing system locked - without any constrictions or other pressures on the outer side of the connector. Before using the connectors, the user must be adequately trained in the techniques and security measures to be adopted; those persons who are not trained or are not able to evaluate the dangers of the situations in which the devices are used must not use these devices. The user must be informed of the existence of an emergency plan, present at the place of work, necessary to handle any possible emergency that can arise. If necessary, it will be prescribed to indicate that the product is delivered individually to the user; or else to have the product checked by competent persons before and after use. If necessary, there must be an adequately studied efficient and safe rescue method to be adopted should a person find himself in difficulty while using this product. Always verify that the physical conditions of the user are such that the connector is used safely during ordinary as well as emergency use. The situations where the device could be used incorrectly are many. Only some of these incorrect uses are included in these instructions and these are indicated with a cross over the illustrations. Only the ways indicated as "CORRECT" are allowed.

Always verify before use that your equipment consists of products compatible with each other and in conformity with the applicable regulations, standards and directives in force. Also verify that the system has been properly assembled and that each component functions without interfering with any of the other components. When a connector is inserted in any fall arrest system, in order to regulate the other components correctly and not compromise the efficiency of the system you must take into account the length of the connector. Using a personal protection device against falls does in no way justify exposing yourself to any type of risk that may even lead to fatal consequences. The user is responsible for the risks to which he exposes himself. The manufacturer and the seller decline any and all responsibility in case of incorrect use, improper application or for products having been modified or repaired by persons not specifically authorized by the producer. The producer assumes the responsibility only for the use for which the product is designed for; and is not responsible for cases of bad maintenance and for cases of user negligence which can aggravate the dangerous conditions which can arise during the use of the connector. The producer declines any and all responsibility for accidents, injuries or death due to improper and incorrect use of its products by the user. The producer declines any and all responsibility for all the cases in which the above-mentioned instructions are not followed. The producer declines any and all responsibility for cases in which a finished product is put on the market without the instructions and technical card. It's essential for the safety of the user that if the product is re-sold outside the original Country of destination the reseller shall provide these general instructions for use in the language of the Country in which the product is to be sold. IMPORTANT: Before using the connector always check its condition; there must not be any signs of wear, corrosion, deformation or defects in general.

If you have any doubts, do not use the connector and replace it immediately. The closing system must function perfectly and to help assure this, the connector must be adequately lubricated. These devices have been designed for use in weather conditions normally tolerated by man.

TYPES OF CONNECTORS FOR PERSONAL PROTECTION (EN 362:2004)

Class A: Anchor connectors: component designed to be linked directly to a specific type of anchor; Class B: Basic connectors: intended to be used as a component; Class M: Multi-use connectors: component which may be loaded in the major and minor axis; Class T: Termination connectors: element of a sub-system in which the loading acts on a predetermined direction; Class Q: Screw gate connectors: intended to be used only for enduring or permanent connections. The class identification is marked on the device. Refer to table to identify the rank and the maximum gate opening ("a" in mm) of your connector.

ANCHORS

Use only anchor's complying with the EN 795 with a minimum breaking strength of 12kN. While using the connector and other personal protective devices, the user must always remain below the anchor point. The position and the height of the anchor point from the ground, must be calculated in the view of a possible fall, taking into account the length of the rope and of the devices connected to the rope, any dangerous obstacles, and the possibility of a "swinging" effect. The work must be carried out in such way as to minimize both the potential fall and potential fall distance. WARNING: The connectors equipped with a manual-locking gate (screwgate) are to be used only when the opening and closing operations are not frequent.

When using these connectors the screw must be completely closed; for connectors class Q verify that the threads of the screw are not visible. Avoid loading a connector across its gate. Verify that a technical identification and control card in conformity with standard EN 365:2004 is provided with the product. This card must be filled in and kept updated by the user. If the card is missing, do not use the device.

WEBBING

Use only homologated webbing marked CE, that is in conformity with the European Standard EN 566 having a minimum breaking load of 22 kN. Before each use verify that the webbing is in good condition, verify that there are no signs of wear, abrasions, cut threads or fraying weave. If the webbing shows any one of the mentioned defects, replace it immediately. In any case always replace the webbing after a serious fall.

Warning: Be sure the webbing is inserted in the correct position.

MATERIALS

All the materials and treatments used are antiallergenic; they do not cause skin irritations or sensitivity. The connectors are made of steel, zinc plated; light alloy, polished or anodized: stainless steel, polished.

2 - TRACEABILITY AND MARKINGS

The following information is etched on the connector : CE marking; (Number of the production process controlling body); Name of the manufacturer or of the person responsible for the introduction on the market; EN 362:2004 (N°) and year of the standard; "Personal Protection Equipment Against Falls From A Height - CONNECTORS" followed by a letter that identifies the class of the connector; A logo that warns the user to carefully read the uses instructions attached to the connector;

Production lot number; Year of production; Maximum load applicable in kN, the strength indicated is the lowest value guaranteed by the producer. This information can be etched in different places depending on the size of the connector. CHECK that these markings are legible even after use.

3 - MAINTENANCE

PRE-CHECKS AND CARE

ALWAYS CHECK before, after and during use that the connector works properly. ALWAYS REPLACE the connector after a fall even if no defect or damage is visible; the initial resistance of the connector could be seriously reduced. The possibility of re-using the device must be authorized exclusively by the producer with a prior written consent that reserves the right to carry out appropriate examinations and testing. Any repair shall only be carried out in accordance with producer's procedures.

REPLACE the connector that shows signs of wear and corrosion. REPLACE the connector if opening and/or closing/locking are difficult. Clean the connectors with soft water and dry it with a non-abrasive cloth. When using CATCH-FREE System connectors, pay particular attention to the slot on the lever: it has to be dirt-free: soil, mud, gravel etc. (list not exhaustive). In the case of use on icefalls or alpine environments, make sure the slot on the lever is not obstructed by snow or ice.

LUBRICATE the mobile components with a general purpose, low viscosity silicone oil used lubricating metal and non-metal surfaces (e.g. LOCTITE 8021). If the connector comes in contact with salt water, wash it immediately and lubricate it. All necessary maintenance operations must be carried out by competent persons explicitly authorized and scrupulously following the operational instructions established by the producer.

STORAGE

Remove the item from its container and store it in a cool, dry, well-aired place. There must not be any corrosive or solvent substances or heat sources (max 100° C) in the storage place. The connector must not come in contact with other sharp objects which could damage it. Never store the equipment before having thoroughly dried it and avoid storing it in places with a high saline concentration. Except for the above-mentioned indications, there are no special precautions to be used during the transport. Avoid leaving your equipment in a car or in a closed place exposed to the sun. Dissolve a disinfectant which contains quaternary ammonium salts in warm water (max 20° C). Soak the tool in this solution for one hour. Rinse with potable water and dry it with a clean cloth.

4 - LONGEVITY

It is rather difficult to establish the length of the device's life, as it can be adversely affected by several negative factors such as intensely frequent or improper use; the conditions the device is required to work in (humid, freezing and icy conditions); wear; corrosion; serious stress with or without relative deformation; exposure to heat sources; improper storage; device age; exposure to chemical agents ... (plus any further reason, not merely limited to all the foregoing reasons). Taking the adequate care of your device (please consult the "maintenance" section accordingly) will have a considerable influence on and will definitely increase device durability and long life. By way of example, the following can be considered as a rule to determine standard potential durability of devices, tools and equipment: - 10 years for products composed of plastic materials and/or with fabric components and elements. For metal products, durability is undetermined. It is nevertheless recommended that you replace your devices, tools and equipment at least every 10 years, considering that in the meantime new techniques and/or rules and regulations may have become applicable and your equipment may no longer be compliant and/or compatible with one another.

INSPECTION

For your safety it is therefore highly recommended that you always check your device and equipment before, during and after use and that that you regularly submit your device and equipment to inspections and controls by competent persons, every 12 months at the latest. These time intervals may change according to frequency and intensity of device and equipment use. Should you ever have even the smallest doubt as to the conditions of the device, please see that it is immediately replaced. Fall Safe® Inspector allows you to easily record and access information on inspections, inventory and use. It tracks equipment assignments by worker or location and automates the inspection process. There are multiple system options available that allow for easy-access and time-saving information.

WARRANTY

This product is provided with a three-year warranty against any manufacturing defect, or defects in the materials it is composed of. The warranty does not cover standard item wear, device alterations, improper storage, damages due to improper use of the device, negligence, improper maintenance, etc., and any further reason not only limited to the aforesaid.



MODEL	a(mm)	WEIGHT(kg)	LOCK	MATERIAL	NOTIFY BODY
FS802	19	0,160	SL	Zinc-Plated Steel	CE 0082
FS846	19	0,160	SL	Stainless Steel	CE 0333
FS33500-2L	18	0,180	TWL	Zinc-Plated Steel	CE 0333
FS33664	17	0,190	TWL	Zinc-Plated Steel	CE 0333
FS829	42	0,270	TWL	Aluminium Alloy	CE 0333
FS822	80	0,290	AL	Stainless Steel	CE 0333
FS828	105	0,340	AL	Stainless Steel	CE 0333
FS814	140	0,380	AL	Stainless Steel	CE 0333
FS33665	22	0,288	TWL	Zinc-Plated Steel	CE 0120
FS820	18	0,090	SL	Aluminium Alloy	CE 1019
FS823	20	0,100	TWL	Aluminium Alloy	CE 0321
FS33547-3L	22	0,090	TL	Aluminium Alloy	CE 0120
FS821	62	0,450	AL	Aluminium Alloy	CE 1019
FS33562	25	0,150	AL	Aluminium Alloy	CE 0321
FS831	110	0,160	AL	Aluminium Alloy	CE 0333
FS33561	10	0,100	SL	Galvanized Steel	CE 0082
FS802QL	16	0,600	SL	Zinc-Plated Steel	CE 0082
FS893	10	0,100	SL	Galvanized Steel	CE 0082
FS894	11	0,770	SL	Zinc-Plated Steel	CE 0082
FS826	21	0,153	AL	Aluminium Alloy	CE 0158
FS825	21	0,220	AL	Zinc-Plated Steel	CE 1019
FS843	52	0,235	AL	Zinc-Plated Steel	CE 1019
FS836	85	0,850	AL	High Tensile Steel	CE 1019
FS33555-3L	27	0,090	TL	Aluminium Alloy	CE 1019

SL - Screw Lock TL - Triple Lock TWL - Twisted Lock AL - Auto Lock